

Producing Mineral Auction

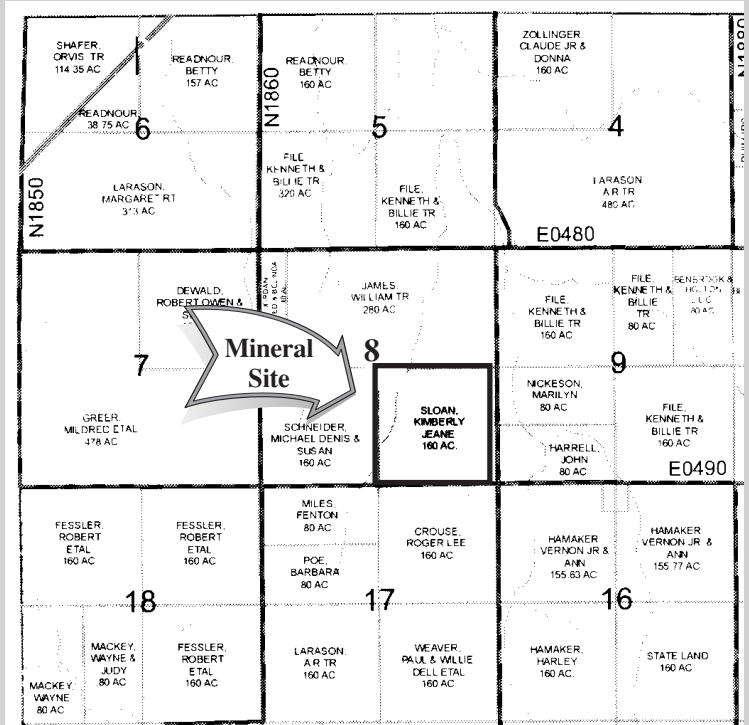
Friday, Nov. 21st • 10:00 A.M.

Location: Shattuck, OK, Ellis Co. Fair Grounds,
Hwy 15 East Side of Shattuck, Red Barn
SELLER: Kimbercompany, L.L.C.

Selling will be a undivided 40 Acre mineral interest in The Southeast Quarter (SE1/4) of Section Eight (8), Township Twenty-One (21) North, Range Twenty-Three (23) WIM, in Ellis Co. Oklahoma.

Minerals are located East of Gage, Oklahoma.

Terms: 10% of sale price to be placed in Escrow day of sale. Balance due upon closing. Seller will provide MINERAL DEED ONLY. Buyer will have 30 days to research title.



Production Income:

From January 1, 2008 to October 15, 2008 is \$2,921.59.

All information has come from sources believed to be reliable, however buyers should research title to their satisfaction. Announcements sale day supercede all advertisement. Auction staff and owners are not responsible for accidents.

Mike "Hoss" Manske
Sales Associate
580-334-5613

Walt Wagnon
Sales Associate
580-939-2281



Robert Young
Real Estate Broker
sksinsurance.com
Cell: 580-938-1500
312 S. Main Shattuck
NAA and OSAA Member